



BearCreeks

Born to be free

Scavenger Pro User Guide 5.8GHz





Important Information

To ensure the continued high performance of your **BearCreeks Bait Boat**, it is important that you read and undertake the following recommendations:

- Never leave the boat in direct sunlight as this causes the boat to become very hot and condensation can build up and cause problems with internal components
- In periods of inactivity ensure the batteries are disconnected from the boat and handset batteries are not left in the handset
- Ensure all batteries are fully charged before you pack the boat away for the next trip
 - It is recommended that a bankside or solar charger be used to top up the battery after every trip
 - The boat and handset batteries should be stored outside the boat and handset
 - Charge all batteries every 2 months to ensure they remain fully charged to prolong their working life
 - If the boat is not going to be used for some months then recharge the batteries every 2-3 months
- Never overcharge the batteries. Turn chargers off when they indicate the battery is fully charged
- Store your bait boat in a dry environment. It is not recommended to store in garages, sheds or attics
- When the boat is being stored for long periods of time turn the boat on and run for a period of time to ensure the motors are kept in good condition and to avoid seizing
- Ensure no wet particles are left inside the boat
- When finished using the boat clean with a damp cloth and ensure no water goes inside the boat
- Always remove the boat batteries when transporting the boat
- Remove the boat battery when sending your boat back for service or repair. We cannot take responsibility for any damage done by leaving the battery inside of the boat
- Ensure your boat is well packaged inside a cardboard box if sending back for a service or repair
- Please disconnect the boat antenna and handset antenna after use to avoid breakage



Thank you for buying your Bearcreeks Scavenger

Outstanding performance and reliability have made Bearcreeks bait boats amongst the most popular in the world. Designed by leading anglers in conjunction with engineers and technicians, there's a bait boat in the Bearcreeks range to answer all of your baiting, rig placement and depth-finding needs.

Please take the time to read and understand this manual. Your Bearcreeks will deliver years of trouble-free usage when used and maintained correctly.

Contents

1 What You Get With Your Bearcreeks Scavenger	Page 4
2 Technical Specifications	Page 5
3 Features	Page 6
4 Charging And Battery Maintenance	Page 8
5 Using Your Bearcreeks Scavenger Handset	Page 10
6 Using Your Bearcreeks Scavenger	Page 12
7 Autopilot	Page 14
8 Bait Boat Optional Accessories	Page 18
9 Warranty Page	Page 21



Scavenger

1

What you get with your Bearcreeks Scavenger

Your Scavenger package contains the following items as standard:

- 1 **Bait boat** 1pc
- 2 **6 Channel remote control handset** 1pc
- 3 **Rechargeable battery for the bait boat** 1pc
- 4 **Rechargeable batteries** for the remote control handset 4pcs
- 5 **Home charger for bait boat** 1pc
- 6 **Home charger for handset** 1pc
- 7 **Rubber antenna for bait boat** 1pc

* For optional accessories (available separately) please see section 8 of this manual.



Scavenger



Scavenger

2

Technical specifications

Product model: Bearcreeks Scavenger

Dimensions: (L x W x H): 680mm x 490mm x 250mm

Weight: 10.8kg - including handset and batteries

Hoppers: 2 independent

Bait capacity: 4kg approx.

Maximum speed: 60m/minute with weed guard,
100m/minute without weed guard

Electrical system: 12V DC

Range: 500m +/- dependant on weather and environmental conditions

Lights: 2 front, 2 rear, 1 port, 1 starboard, 4 battery status

Radio handset: 6 channel, 5.8GHz

Propulsion: 2 independent motors with 2 maintenance free propellers

Running time (at max speed):

Lead Acid Battery - 2 hours +

Scavenger



Scavenger

3

Features

The Scavenger comes with the following outstanding features:

- 1 **3D CAD designed,** hydro-dynamic trimaran ABS hull giving excellent stability and increased buoyancy. The upper deck and the underwater part are fixed by a stainless bolt, which makes the maintenance very easy. The waterproof silicon gasket between the upper deck and the hull ensures the boat is 100% waterproof.
- 2 **5.8GHz 6 channel radio system,** delivering superb range with less interference. The handset range is 500m +/- dependant on weather and environmental conditions. The handset charger and its AA rechargeable batteries come as standard.
- 3 **Microprocessor controlled variable speed in forward and reverse.** Power to the motors is regulated through a microprocessor to give you unrivalled manoeuvrability and response.
- 4 **Optional 'Autopilot' function,** which allows your bait boat to steer automatically, with complete accuracy, to as many as 20 pre-ordained points and return.
- 5 **Built-in fail-safe** means you won't lose your boat. When the signal is weak, the boat will stop going forward and it will automatically drive in a circle until it finds a strong signal and comes back into full control.
- 6 **Internationally patented twin independent hoppers.** The two hoppers can be individually opened and due to their design will contain and drop even the smallest particles efficiently.
- 7 **Internationally patented twin independent hook (rig) release system** can be used to place two rigs and drop them individually.
- 8 **Two quality, quiet direct drive motors and propellers** deliver optimum performance and prolong battery life.
- 9 **Stainless steel weed guards** ensure that weed, line and detrius do not foul the propellers or impede performance.
- 10 **Waterproof rocker switches.** All switches and charging sockets are waterproof.
- 11 **Six ultra high intensity LED lights** are ultra-visible at range, even in daylight.

Scavenger



Scavenger

- 12 **Tri-coloured battery condition meter** for accurate boat battery condition information.

When the battery is fully charged all lights on the meter will light up; when the battery is running at its lowest charge, the red light on the meter will light up.

- 13 **Remote control lighting.** All lights can be turned on and off from the handset when your boat is in use. Please note that headlights only turn on when the boats lights are turned on and the boat is driving forward.

- 14 **Handset battery condition meter** for accurate handset battery condition information.

When the battery is fully charged all lights on the meter will light up; when the battery is running at its lowest charge, the red light on the meter will light up.

- 15 **Watertight removable battery system** in the central hull provides easy access to change the battery. Changing the main boat battery takes only seconds.

- 16 **Wireless fish finder.** Our optional fish finders are designed for bait boat usage and enable fantastically accurate bait placement to specific features and depths. Greyscale or colour monitors deliver incredibly detailed information with all the extras available, such as GPS, zoom, bottom hardness etc that you would expect from any fish finder.

- 17 **2 year warranty.** In the rare event of a problem, every Bearcreeks Scavenger is supported by our comprehensive 2 year warranty. Please see the inside back cover for your warranty registration document and terms and conditions.

- 18 **Unrivalled after-sales support.** At Bearcreeks we offer a full service and maintainace facility to ensure the ongoing performance of your boat.

Scavenger



Scavenger

4

Charging and battery maintenance

Notes:

Do not plug the battery into feature finder cable. The feature finder cable is easily identified by its 'L' shaped connection (right) and clear labelling saying "POWER CABLE FOR THE FISH FINDER".



- To ensure trouble-free charging, only use the chargers supplied by Bearcreeks
- Please make sure that both the boat and handset are switched off while being charged.
- When you receive your Bearcreeks , fully charge all batteries.
- When the green light indicates your battery is charged, always remove batteries from the charger.
- First charge of a new battery to fully charged will take approximately 8 hours.
- Dry cell batteries (non-rechargeable) may be used in the handset.

Warning: Please do not attempt to charge the handset with non-chargeable batteries in use.

Charging the handset batteries

Charging the handset batteries with home charger

- 1 When the voltage of the handset is less than 4.2V, a buzzer will sound and the handset cannot be used until charged.
- 2 Take the 4 batteries out of the handset and put them into the charger. Then plug the charger in.
- 3 The display will show 'CHG' and the icons will move constantly.
- 4 When the icons are full and stop moving, the batteries are fully charged. This will take around 7 hours for discharged batteries.
- 6 There is also a discharge function on the charger. Insert the batteries, connect to power and press the function key on the side of the charger for 3 seconds. The display will change to 'DISCHG'. This will normally not be needed.

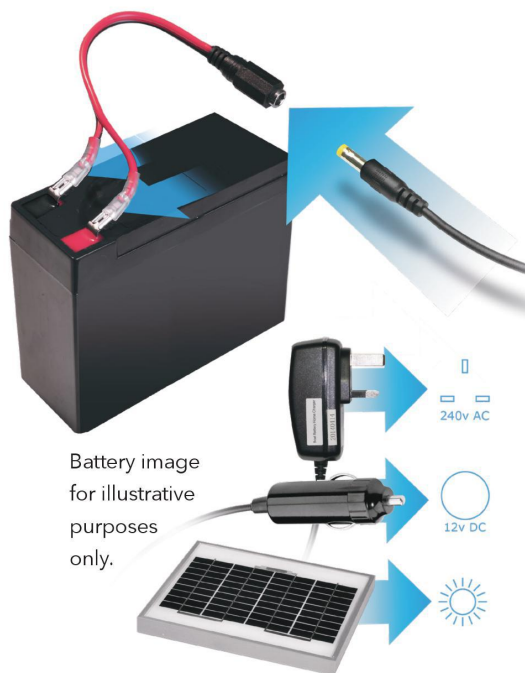


CHARGING



FULLY CHARGED

Scavenger



Charging the boat battery

Charging the lead-acid boat battery with home charger

- 1 Connect the connector of the battery wire to the connector of the home charger.
- 2 Plug the charger into the wall socket. A red light will illuminate to indicate that your battery is not charged.
- 3 When the light on the charger turns from red to green, the battery is fully charged.

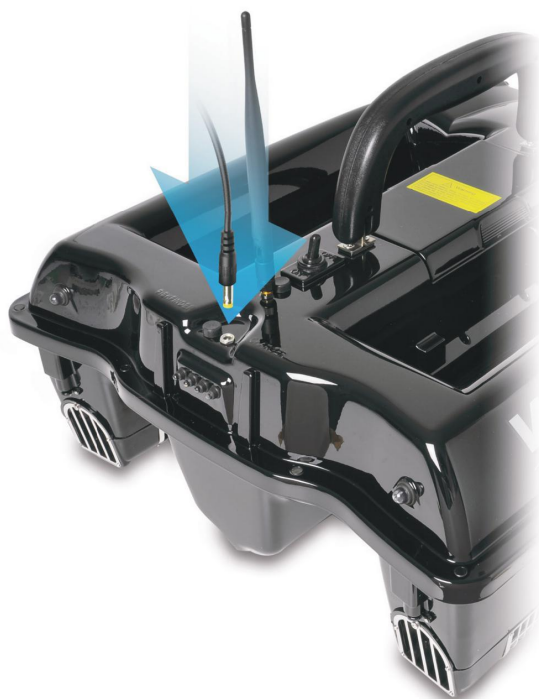
Note: As with the handset, the boat battery can be charged via our optional car charger or solar panel.

Charging the lead-acid boat battery without taking it out of the boat.

You can charge your battery directly, without taking it out of the boat, via the charging socket on the rear of the boat. Please be sure the power switch is OFF.

Warning:

The lead-acid battery will release some gas when being charged. Please make sure that the battery cover is opened when you charge the boat in order to avoid pressure building up inside the boat, which could cause serious damage.



5

Using your Scavenger Mk4 Handset



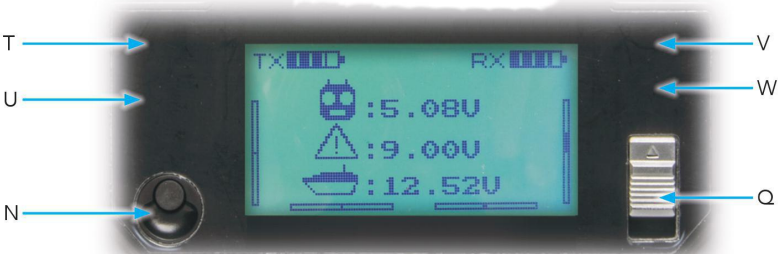
- A **Antenna:** Stout design for strength
- B **Forward:** Push the right hand joystick forward.
- C **Reverse:** Push the right hand joystick backward.
- D **Turn left:** Push the right hand joystick left.
- E **Turn right:** Push the right hand joystick right.
- F **Open the left bait hopper:** Push the left hand joystick left.
- G **Open the right bait hopper:** Push the left hand joystick right.
- H **Release the left rig (hook):** Push the left hand joystick up.
- I **Release the right rig (hook):** Push the left hand joystick down.
- J **VRA trim:** Roll switch left or right to equalize thrust so your boat goes straight when the right hand joystick is in the forward position.

Always start with the dial in the middle position and adjust accordingly.
- K **Lights on/off:** Flick the switch to turn the lights on and off from range. Exact information about the status of the boat is displayed when the lights are on. To save power and prolong battery life, turn the lights off when not needed.
- L **Lanyard attachment loop:** attach the lanyard strap (optional) .



Scavenger

M Display screen



Voltage of handset: When the voltage is less than 4.2V, the buzzer will sound and the handset cannot be used until charged.



Warning voltage: The setting range is 8.00V - 11.00V and this can be adjusted using the VRB button, according to the type of boat and batteries.



Voltage of boat: When the voltage is less than the warning voltage, the buzzer will sound and the boat should be returned to the bank.

Battery	Warning Voltage
Lead-acid battery	10.1V

NOTE: It is worth considering purchasing a replacement set of batteries as a stand-by, to use when the original set are being charged.

- N **Program button:** press the button for the screen display
- O **VRB button:** sets the warning for the voltage of the boat, between 9.00V and 11.00V.
- P **On/off switch for additional functions:** for use with upgraded functions, e.g. Autopilot.
- Q **Main on/off switch:** turns the power of the remote control on or off.
- R **Battery box:** insert 4 x 1.2V 1500Mah Ni-MH batteries
- S **Battery cover**

Screen display buttons:

- T Up button U Down button
- V OK to confirm W Esc to quit

Scavenger



6

Using your Scavenger

Loading and dropping your bait

The left hand joystick operates the bait hopper doors.

- 1 Insert your rig into a hopper, if desired, by passing it under the boat and up through your chosen hopper.
- 2 Close the hopper doors manually from below, ensuring 'click' closure.
- 3 Load either or both bait hoppers with your chosen bait.
- 4 Navigate your boat to your chosen spot
- 5 Move the left hand joystick to the left to open the left bait hopper door. The port (left) navigation light will flash simultaneously to confirm the release of your bait.
- 6 Move the left hand joystick to the right will drop the right bait hopper door. The starboard (right) navigation light will flash simultaneously to confirm the release of your bait.

Loading and releasing your rig

The left hand joystick operates the hook (rig) release system.

- 1 Insert your line(s), rigs or hooks on either or both of the hook release sytem pins situated on the back of the boat.
- 2 Moving the left hand joystick up will drop the left rigs. The port navigation light will flash simultaneously.
- 3 Moving the left hand joystick down will drop the right rigs. The starboard navigation light will flash simultaneously.

How to locate the signal

- 1 Push both the left and right joystick to the middle and lower 45 degrees (see diagram) and turn on the handset at the same time. The screen should now display "RX Binding".
- 2 Turn the boat on.
- 3 Several seconds later, the screen will display "RX Bind OK" which means a signal has been found. The blue signal lights are the rear of the boat will be on.
- 4 If the blue signal lights are not on, the signal has not been found. Repeat the above steps.





Trimming the motor

Differing loads, foreign bodies in the propellers plus wind and water conditions mean that any bait boat will not always drive straight. Use the motor trim roller on the upper-left of the remote control handset to adjust ('trim') the motors so your boat drives straight when the right hand joystick is in the forward (12 o'clock) position

- 1 Adjust the motor trim roller (A) anti-clockwise and the boat will steer left.
- 2 Turn the motor trim roller (A) clockwise and the boat will steer right.

Turning the lights on and off

- 3 Turn the lights on and off with the top right ON/OFF switch (B). Please note that the two front lights will only work when the boat is driving forward.

On returning to the bank

- 1 Do not stop or pick up the boat by the aerial, as damage will occur.
- 2 Switch off the boat first and then the handset.

Notes

- Always turn the handset on first and then the boat. To turn off, turn off the boat first and then the handset. This will ensure that you are always in control of the boat.
- The handset should be protected from water at all times.
- Continued starting, stopping and reversing of the boat drains the battery. Smooth operation at all times is recommended to ensure optimum battery life.
 - Pushing the right (steering and speed) joystick quickly to its extremes will put more stress on the electrical components and the battery.
 - Decreasing your speed slightly (your boat will still be very quick!) will improve battery life.
- The range of the boat is 500m+/- dependant on weather and environmental conditions. Should the signal from the handset become weak, the boat will stop going forward and it will automatically drive in a circle until it finds a strong signal and comes back into full control.

Bearcreeks bait boats have been patented and trademarks are in place to cover appearance, design, structure and working principles. These have been registered under English and Chinese law and anyone found to be guilty of infringement of the appropriate patent and/or trademark legislation, will be pursued via appropriate legal proceedings.



Scavenger

7

Autopilot

An optional Bearcreeks feature is our ground-breaking 'Autopilot' function, which allows your bait boat to steer automatically, with complete accuracy, to as many as 20 pre-ordained points and return.

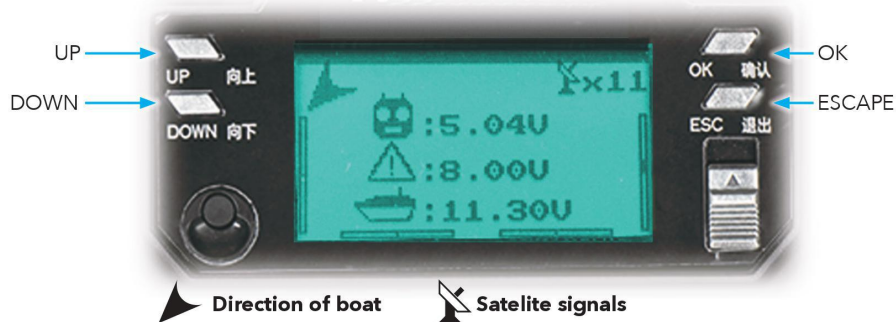
Benefits of Autopilot

- 1 It can save 21 different points - starting point plus 20 fishing points.
- 2 The boat can run automatically between any saved fishing points.
- 3 It can calculate the effective range between starting point and fishing point.
- 4 It can show the longitude and latitude of the boat.
- 5 During the whole Autopilot process, the boat will continue to run if the signal is lost for up to 10 seconds due to environmental disturbance. If the signal is lost for more than 10 seconds, the boat will automatically go back to the starting point.
- 6 During the whole Autopilot process, if the boat is low on power (red indicator light on), the boat will return automatically.
- 7 This is the first time a 5.8GHz remote control has been used on a bait boat, with a strong anti-interference ability.

Scavenger

Operating Autopilot

Please note that with the Autopilot Upgrade you will receive an alternative handset, featuring a control interface around the screen with 4 navigational buttons (pictured).



Turn on the remote control; then turn on the boat; wait for Autopilot signal. When the number of satellite signals is more than 8, the automatic feature can be set and operated.

Geomagnetic calibration

- 1 When the number of satellite signals is more than 8, press OK, then press DOWN to choose the geomagnetic calibration and press OK again. This will start the horizontal calibration; turn the remote control in a 360 degree horizontal circle.
- 2 When the 4 parameters on the interface become stable, press OK. This will start the vertical calibration; turn the remote control in a 360 degree vertical circle.
- 3 Press OK again and the calibration will be complete.
- 4 Press ESC to go back to the main menu.

Note: It is better to set the starting point once the number of satellites is 15+ if possible. When the satellite signal is strong, accuracy of fishing points can be <1m.



Saving starting point and fishing points

- 1 Choose the starting point; take the boat onto the bank; press DOWN and enter the menu. By pressing UP/DOWN, the starting point can be chosen. Hold down OK, to confirm YES or NO. If you confirm YES, press OK again, and the starting point will be saved.
- 2 After saving the starting point, press ESC to return to the main menu. You will see the boat's direction, number of satellite signals, voltage of the remote, power warning and the actual voltage of the boat.

Note: You should set the starting point well before the boat is in the water. If not, the GPS cannot be found; the range between the remote control and the boat cannot be calculated and also saved fishing points cannot be called in future. When the range between the starting point and fishing point is out of the effective range of the remote control, the boat cannot travel to the fishing point automatically and will return to the starting point.

- 3 Place the boat in the water and direct it to where you want to go. You can save fishing points from numbers 1 to 20 and release bait & hooks accordingly. To save fishing points, follow the same process as for the starting point.
- 4 By pressing UP, you can see the longitude and latitude of the boat. If you press UP again, you will see the starting point and the next fishing point. Press ESC again, to go back to the main menu.



Scavenger

Returning to starting point or fishing points (CALL)

- 1 If you want to go back to the starting point or go to saved fishing points, press DOWN. The display will show SAVE, CALL and EXIT. Press OK again and choose CALL. Hold down OK and confirm YES or NO. If you confirm YES, press OK again.
- 2 After finishing CALL, press ESC to go back to the main menu.
- 3 Using the operation of CALL, the boat can run automatically between any fishing points.
- 4 By pressing UP, you can see the longitude and latitude of the boat. If you press UP again, you will see the starting point and the next fishing point. Press ESC again, to go back to the main menu.
- 5 If the boat is blocked by obstacles and you need to stop the boat, press ESC and go back to the main menu. Press DOWN and the display will show SAVE, CALL and EXIT. Press EXIT and then hold down OK again. Hold down OK and confirm YES or NO. If you confirm YES, press OK again. The boat will stop automatically running. Operate the right joystick manually until you are ready to resume the automatic function.

Please Note:

- 1 Only use the Autopilot outdoors; the signal will be weak indoors.
- 2 Satellite signal is affected by weather and geographical location. Always allow 5-10 minutes from turning on the remote control to ensure the stability of the signal.
- 3 Autopilot will be seriously compromised if close to high-voltage sub-stations.
- 4 The antenna is an excellent conductor of electromagnetic waves so PLEASE DO NOT USE DURING THUNDERSTORMS.
- 5 Electronic compass technology is easily interfered with by the surrounding environment. Please do not use close to electromagnetic field, metal mining areas or high-voltage wires.

Scavenger



8

Bait Boat Optional Accessories (not included)

Large Deluxe Bait Boat Bag

The main compartment is built to accommodate our bait boat (and most other brands). Lined with easy-to-clean PVC, the bag features a removable, padded mat to protect your boat and keep it clean on the bank. 2 external pockets to store your handset, batteries and chargers plus a third external pocket is custom made to take a solar panel. Neoprene carry handles and shoulder strap ensure comfortable transportation and strong, chunky zips ensure smooth operation.

Dimensions: W 55cm x L 80cm x H 23cm

Waterproof Handset Cover

Keeps your handset dry when used in the rain, featuring a clear panel for easy use and a shoulder strap for easy transportation both when in and out of use.

Quick Release Handset Lanyard

Our handset lanyard means your handset is always conveniently to hand when you need both hands free during usage. A quick release clip ensures swift attachment and detachment.

Spare Batteries

On a long session, you need to be sure you've got all the power you need at your disposal, so it's worth taking a spare battery.

Solar Panel 5w

By taking its power from the sun (even in cloudy conditions), our solar panel will top-up your battery during a session. Plus, it's fully diode protected, so it won't flatten your battery if left plugged in overnight. The framed panel is made from toughened, laminated glass for long life and durability.

Car Charger

A simple, convenient way of charging your boat during or between sessions.





Toslon TF640 GPS Feature Finder

The Toslon TF640 GPS Feature Finder will fit any Scavenger bait boat. It combines high-accuracy GPS; digital, wireless sonar and an electronic compass. The GPS system enables you to accurately drive your boat to any pre-marked hotspot, with pinpoint accuracy. The advanced sonar shows you the actual bottom structure and any fish, all in full colour. Additionally, the electronic compass shows you the direction your boat is heading which means you can navigate your boat in the dark, or in fog etc.

Features

- GPS data display shows:
 - Distance to target
 - Distance to home
 - Speed
 - ETA
 - Direction
 - Route
 - Time
 - Battery meter
 - Signal lost alarming
 - Satellite transmission quality indicator
 - Latitude/longitude
 - Detailed target information including; icon, name, date, etc.
- 20 RF channels to eliminate interference
- State-of-the-art digital transmission
- Real-time display communicates the bottom make-up precisely where the boat is located
- Colour line distinguishes fish from bottom structure and displays hardness
- Depth reading above all marked spots
- Fish, shallow, low boat and display battery alarms



Toslon TF500 GPS Feature Finder

5.8Ghz wireless fishfinder TF500 was specially designed for all kinds of bait boats. It provides precise sonar detection. And with incredible stable wireless performance you can see the fish and bottom in a range over 300m distance; Sonar frequency: 115kHz Radio frequency: 5.8Ghz RC Distance: 300m Display: 4.3" TFT with resolution 480*pixels; 65,536 color; Multi Language

KEY FEATURES

Sonar

- Depth Capability: 40m (130ft)
- Sonar Frequency: 115Khz
- Sonar Beam Angle: 60deg @-10db
- Sonar Alarms: Fish / Shallow / Low Battery
- Water Temperature

RF

- RC Distance(field test): Max 300m (1000ft)
- Radio Frequency: 5.8Ghz
- RF Channels: 20
- RC Power: 20dBm

Display

- Display size: 4.3"TFT LCD; Sunlight Viewable
- Display Resolution: 480*272Pixels; 65,536 color
- Visible under sunlight
- Multi-language
- Monitor and Display Real-time Voltage of Bait boat Battery
- IPX6 Level Waterproof Casing Design

Features

- Display target depth reading above each fish symbol
- Displays fish targets at higher boat speeds
- Memory settings
- Rugged portable case gives the full protection to Fishfinder while in storage or transport (optional)



9

Warranty

We offer you a 12 months warranty from the date of purchase. The guarantee covers any defects arising from the drive unit and the electrical and electronic parts of the boat, faulty material and workmanship. It does not cover batteries, damage arising from improper use, breakage, or normal wear of the boat or associated equipment. The guarantee is invalidated if repairs or modifications are undertaken by unauthorised persons.

The guaranteed period for all batteries purchased from Bearcreeks is 6 months from the date of purchase.

Please complete and return the form overleaf to register your Bearcreeks Warranty.





22



Scavenger

Your warranty

Please fill in and return this form on date of purchase and send back to address below left.

Any returned boat that does not have a returned warranty form will not be under warranty.

Only the original copy will be accepted, not a photo copy.

We are pleased to offer a full manufacturer's 2 year warranty on all Bearcreeks Bait Boats, excluding batteries. Batteries are covered by a 6 month warranty.

The first year of the warranty will cover collection from UK main land only and repair free of charge covering any defects arising from the drive unit and the electronic parts of the boat, faulty material or workmanship not covering damage caused by incorrect use accidental damage and any work carried out by any unauthorized persons.

After the first year the owner has a maximum of 14 days, one year after date that boat was registered to book a full service to extend the warranty into the second year, if not serviced after this time all repairs and carriage would be charged.

The warranty covers any defects arising from the drive unit and the electronic parts of the boat, faulty material or workmanship. Carriage rates may vary depending on location, Scottish highlands etc... 2 year warranty excludes Atom and Shuttle bait boats, both carry standard 12 months warranty.

We strongly suggest keeping all original packing for your boat as in the unlikely event of a fault with your boat suitable packing for such an item of this size is hard to source to ensure boat is received back for repair undamaged.

Please note any boat that is received back damaged due to lack of correct packing will not be repaired under any guarantee.

It is important to retain the retailers receipt as proof of purchase, please staple a copy of your receipt to your warranty form when you return.

If for whatever reason this product is replaced during the guarantee period, the guarantee on the new product will be calculated from original purchase date.

To qualify for your guarantee, the product must have been used according to the instructions supplied.

Collections made for repair only within uk mainland only

Genesis sports ltd will not be responsible for any carriage charges for any boats sold outside of uk mainland that need repair.

Genesis sports ltd will not held responsible for any consequential losses due to bait boat failure.

By signing this warranty form you are agreeing to all terms stated. Please note no confirmation will be sent back when warranty form is received.

Exclusions

Products shall not be liable to replace or repair under terms of guarantee where:

1.The fault has been caused or is attributable to accidental use, misuse, negligent or used contrary to the manufactures recommendations or where the fault has been caused by power surges or damage caused in transit.

2.Repairs have been attempted by persons other than our service staff.

3.The product has been used for hire purposes.

4.The product is second hand.

This guarantee is offered as an additional benefit and does not affect your statutory rights as a consumer.

(S. 62)

Signature of consumer

(S. 62)

Signature of retailer

Signature of retailer

Signature of retailer

Signature of retailer

Signature of retailer

Signature of retailer

Signature of retailer

Signature of retailer

Signature of retailer

Signature of retailer

Signature of retailer

Signature of retailer

Signature of retailer

Signature of retailer

Scavenger